



Commercial Walls & Ceilings Specialists

Reliable, organised and on-program delivery across  
Southeast Queensland.

# Capability Statement



# Commercial Wall & Ceiling Specialists

CRA Construction delivers commercial plastering, ceilings, partitions and carpentry fit-out packages across Southeast Queensland.

With a structured full-time workforce of trades, apprentices and supervisors, CRA supports builders with reliable project delivery, strong supervision and clear communication across multiple projects.

We partner with builders, developers and project managers to deliver:

- Schools and education facilities
- Medical and health projects
- Hospitality and fit-outs
- Multi-residential developments
- Architectural residential projects

## Why Builders Choose CRA

- Reliable, organised teams that stay on program
- Strong site supervision and communication
- Clear documentation and variation management
- Skilled full-time workforce backed by a contractor network
- Award-winning training culture

*At CRA, we don't just deliver projects. We're building a stronger industry — one wall, one ceiling, one tradesperson at a time.*



# The CRA Difference

## Reliable Teams

Our full-time workforce and trained supervisors ensure consistent delivery across projects.

## Clear Communication

Builders, project managers and trades stay aligned through proactive communication.

## Professional Standards

We leave sites clean, organised and ready for the next trade.

## Industry Leadership

CRA invests heavily in apprenticeships and training to strengthen the wall and ceiling industry.

## Industry Impact

CRA is committed to raising standards in the plastering industry by investing in training, leadership and the next generation of trades.



# Our Capabilities:

Complete wall and ceiling packages for commercial projects

CRA delivers complete wall and ceiling packages across commercial, multi-residential and high-end residential projects, with the workforce, supervision and systems required to support projects from small fit-outs through to large multi-stage developments.

## PLASTERING

Sheeting, setting & sanding for flawless results

Cornice / Square Set Tearaway finish / Easy Jambs / Access Panels

Precision finishes around doors, windows & openings

## CEILINGING & PARTITIONS

Grid ceiling systems

Bulkheads, coffered ceilings, and feature details

Certified fire and acoustic solutions

Lightweight and prefinished framing systems

## CARPENTRY & FIT-OUTS

Commercial and architectural carpentry packages

External cladding and specialist panel installation

Office, retail, and education fit-outs

## SPECIALIST SOLUTIONS

Complex architectural finishes – curves, arches, staircases

Level 5 finishes to skylights, feature walls, and high-lit areas.

Specialist elements – pelmets, baffling, and custom cornices

High-performance cladding and panel systems

## WHY CRA?

- Full-time in-house team of trades and apprentices plus a huge database of contractors
- Award-winning training culture – building skills and leadership across the team
- Proven delivery – from residential builds to multi-million-dollar commercial projects
- Clear communication – clients, builders, and trades always know where we're at

At CRA, we don't just install walls and ceilings. We deliver outcomes that are built to last – on time, on budget, and beyond expectations.

# Project Systems & Compliance

CRA Construction operates with structured systems that support reliable commercial project delivery.

Our approach ensures builders and project managers have full visibility and confidence at every stage of the project.

## **Our systems support:**

- On-program delivery through structured supervision and scheduling
- Clear documentation including SWMS, JSEAs, site records and variation tracking
- Consistent quality control across supervisors, foremen and trades
- Strong site communication between our team and builder representatives
- Compliance with safety, environmental and quality management standards

Our systems align with recognised industry frameworks including ISO 9001 Quality Management, ISO 45001 Workplace Health & Safety and ISO 14001 Environmental Management.

This structured approach allows CRA to deliver projects that are organised, compliant and predictable for our builder partners.

**Reliable, organised and on-program – that's CRA Construction.**



# Project Delivery Approach

How CRA delivers organised, reliable projects

At CRA Construction, we follow a structured approach to ensure projects run smoothly, stay on program, and meet the highest quality standards.

## Before the project begins

- Plans reviewed and scoped by estimating team
- Supervisor assigned to the project
- Materials and labour scheduled to suit builder program
- SWMS and documentation prepared

## During construction

- Dedicated supervisor managing communication with site team
- Foreman coordinating daily site works
- Quality checks completed throughout installation
- Variations communicated early and documented clearly

## Project completion

- Final inspection completed by CRA supervisor
- Defects addressed promptly
- Site left clean and ready for the next trade
- Documentation finalised for builder records

## CRA Site Standards

- Professional presentation on site
- Clear communication with builders and project managers
- Safe, compliant work practices
- Respect for client homes and project environments



**Reliable, organised and on-program – that's CRA Construction.**

# Workforce

## Structure & Apprenticeship Development

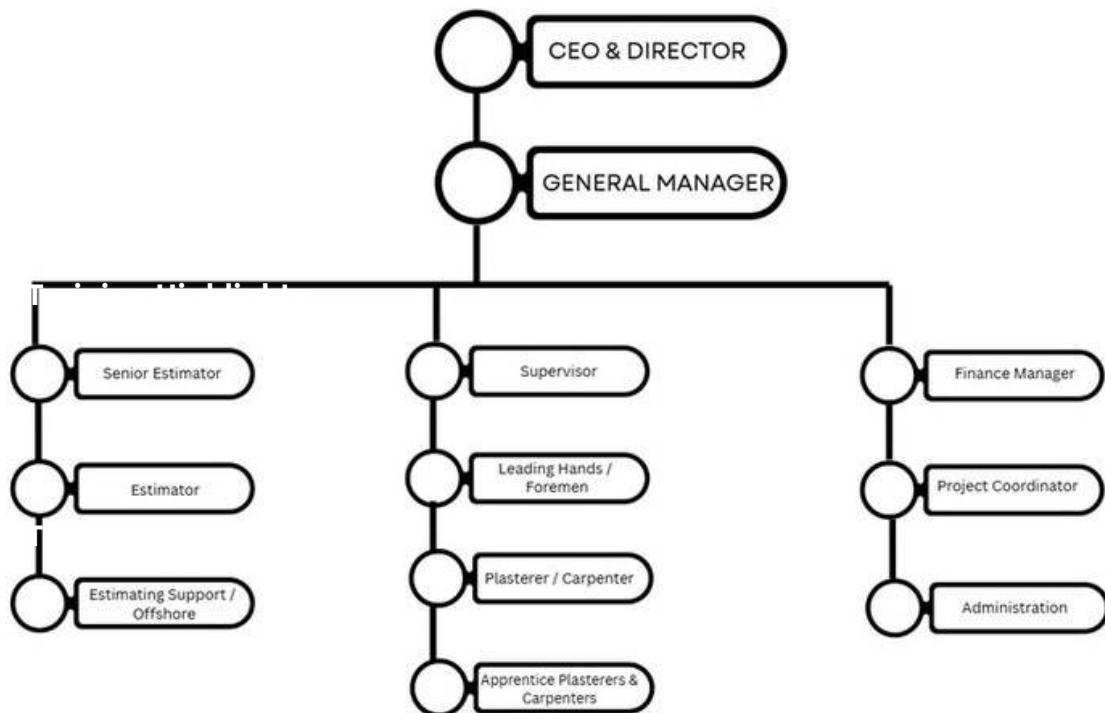
CRA Construction invests heavily in developing the next generation of trades through structured apprenticeships, leadership training and mentorship from experienced supervisors and foremen.

By maintaining a full-time workforce supported by apprentices and skilled trades, CRA ensures consistent workmanship, reliable delivery and long-term capability across every project.

Our commitment to training strengthens both our team and the future of the wall and ceiling industry.



### CRA Team Structure



***Each CRA project is supported by dedicated supervision and experienced trades, ensuring clear communication, accountability and consistent quality on site.***

# Management Profiles

## Chris Allen, Director & Co-Founder

Chris began his career as a mature-age plastering apprentice in 2007 and quickly developed a passion for the craft. In 2016, he and Kim co-founded CRA Construction, driven by a vision to raise industry standards.

Today, Chris oversees the day-to-day operations with a personal focus on client relationships and business development. As CRA's first point of contact for builders and clients, Chris ensures projects start strong, expectations are clear, and partnerships are built on trust.



## Kim Allen, CEO & Co-Founder

Kim is the CEO and co-founder of CRA Construction. Since 2016, she has been instrumental in building CRA into a multi-award-winning company recognised for its culture, training, and leadership.

Her portfolio spans marketing and branding, recruitment, HR, training and development, accounts, and community outreach. Beyond CRA, Kim serves as the first female Chairperson of AWCI QLD, where she advocates for licensing reforms, training pathways, and raising standards across the wall and ceiling industry.



# Community & Industry Leadership

At CRA, community isn't an afterthought – it's the core of who we are. From inspiring the next generation of plasterers to driving change at a state level, we're committed to building more than walls – we're building stronger communities and a stronger industry.



## Plastering Comes to Schools Program

- CRA volunteers run workshops in Brisbane schools from kindergarten to Tafe.
- Students and teachers learn the history and craft of plastering.
- This program is creating pathways into trades and building pride in plastering for the next generation.
- This program raises the profile of plastering and inspires the next generation.

## Industry Leadership

- Kim Allen, CEO of CRA, proudly serves as the first female Chairperson of AWCI Australia QLD State Advisory Committee, representing and supporting the wall and ceiling industry at a state level.
- Through this role, CRA contributes to raising industry standards, advocating for licensing reforms, and supporting training pathways for the next generation of tradespeople. This reflects CRA's mission: not just participating in the industry, but reshaping it for the future.

At CRA, we're not just building projects – we're building the future of our industry

# Awards & Nominations



Our awards reflect not just what we build, but how we lead, train, and raise standards across the industry. CRA is proud to be recognised nationally and locally for our culture, innovation, and contribution to construction.

## Recent Highlights



**WINNER 2025**  
QLD Building Women Awards  
Executive Leadership



**WINNER 2025**  
QLD Building Women Awards  
Innovation and Change Leader



**WINNER 2025**  
QLD Building Women Awards  
Industry Contribution

## INDUSTRY & TRAINING EXCELLENCE

- QLD Training Awards - Metropolitan Small Employer - Winner (2024), State Finalist (2024), Metropolitan Medium Employer - Finalist (2025)
- AWIC Awards - Contribution to Construction Winner (2024), Member of the Year Winner (2023)

## LEADERSHIP & INNOVATION

- HIA - QLD Building Women Awards - Innovation & Change Winner (2025), Executive Leader Winner (2025), Industry Contribution Winner (2025)
- Women Changing the World - Company of the Year - Silver Winner (2025)

## BUSINESS GROWTH & ENTREPRENEURSHIP

- Australian Small Business Champion Awards - Finalist (2025)
- Brisbane Young Entrepreneur - Finalist (2023, 2024)
- Tradies in Business - Top of the Trade, Best of the Best Winner (2023), Top of the Trade 5+ Employees Winner (2023), Tradies in Business - The Real Boss Winner (2023)

**Every award we've received is a marker of our mission in action: building quality, empowering people, and setting the benchmark for the future of our industry.**

# Commercial Project Experience

## Darling Point Special School



Large Scale School Redevelopment Project  
368 Upper Esplanade, Manly QLD

### Project Duration

>2 years



## Dakabin SHS Community Health Precinct



CHU Children's Health Unit Project  
255-267 Marsden Rd, Dakabin QLD

### Project Duration

5 months



## Newnham Hotel



Pub update including Pokies Room refresh  
516 Newnham Rd, Upper Mount Gravatt

### Project Duration

3 months



## Greville Terraces, Woolloowin



Multi Stage Townhouse Development

**Project Duration**

>1 year



## Private Residence - Ascot



Push Architecture designed heritage home with fancy cornice, skylights, wellness room & Level 5 finish.

**Project Duration**

>2 year



## Private Residence - New Farm



Tim Stewart Architecturally designed riverfront residence. Featuring a highly lit curved art feature wall, hidden/flush speakers/power points. Level 5 finish.

**Project Duration**

>1 year



## Harrison St, Bulimba



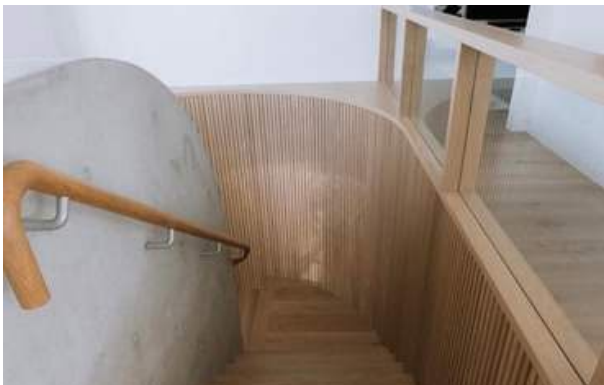
Marc & Co designed high end new build with scalloped patio ceiling, curved walls, curved fireplaces & ceilings

### Project Duration

3 months



## Chester St, Teneriffe



Shaun Lockyer design featuring curved skylights, staircase and arches.

### Project Duration

3 months



## Amelia St, Seven Hills



Marc & Co designed residence including curved plastered rangehood & Level 5 finish

### Project Duration

3 months

**bespoke**  
CONSTRUCTIONS

# Partner with CRA Construction

Reliable, organised and on-program delivery for builders across Southeast Queensland.





## Contact Information

-  0413 831 758
-  [info@craconstruction.com.au](mailto:info@craconstruction.com.au)
-  [craconstruction.com.au](http://craconstruction.com.au)
-  44/115 Robinson Road  
East, Geebung QLD 4034



## Socials

-  [@craconstruction](https://www.instagram.com/craconstruction)
-  [@craconstruction.com.au](https://www.facebook.com/craconstruction.com.au)